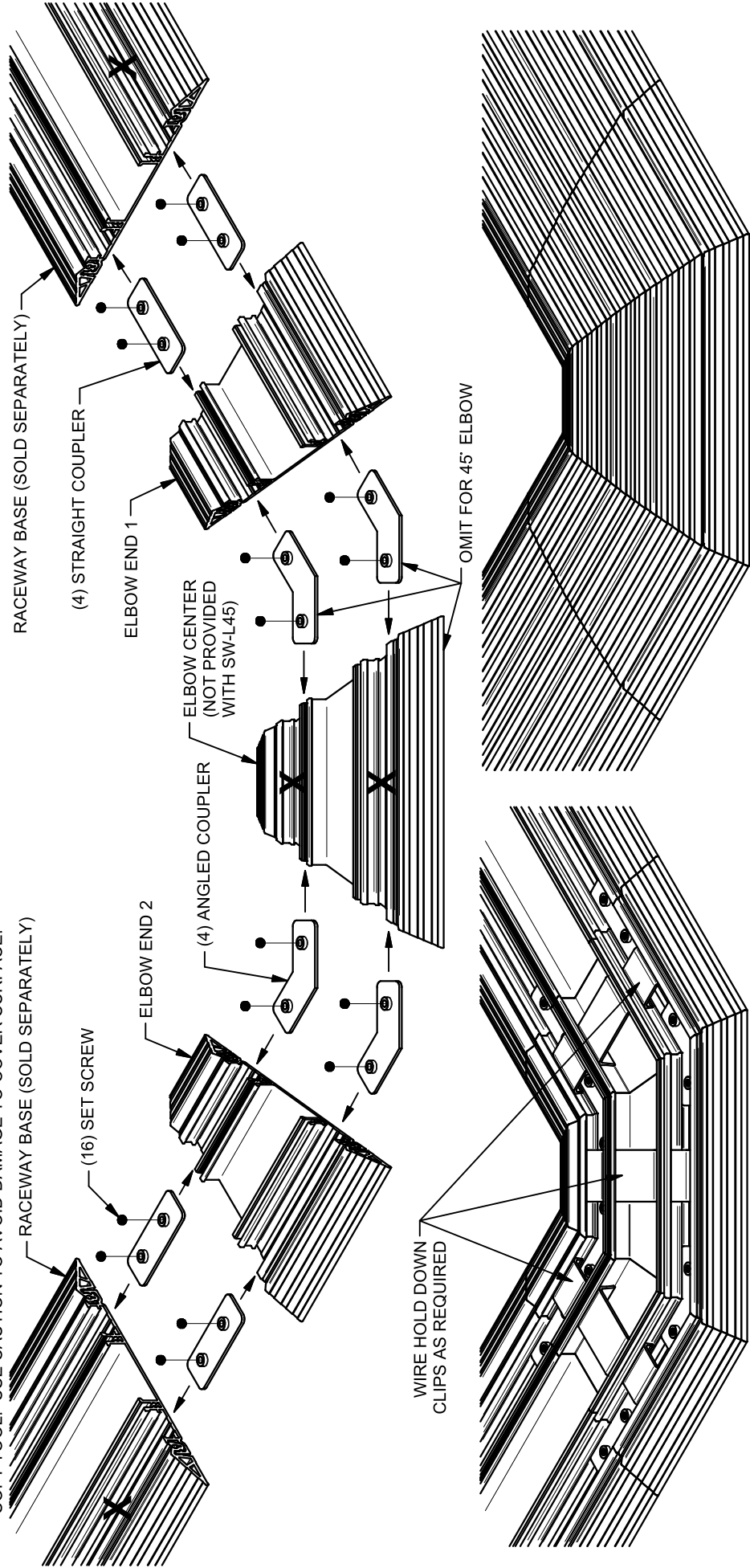


1. INSTALL SET SCREWS INTO STRAIGHT AND ANGLED COUPLERS.
2. DETERMINE ELBOW DIRECTION. INSERT ANGLED COUPLERS AS REQUIRED, AND SLIDE ALL (3) ELBOW BASE PIECES TOGETHER. OMIT 'ELBOW CENTER' AND (2) ANGLED COUPLERS IF A 45 DEGREE ELBOW IS REQUIRED ('ELBOW CENTER' NOT PROVIDED WITH SW-L45).
3. TIGHTEN SET SCREWS TO FASTEN ELBOW BASE PIECES TOGETHER. SLIDE STRAIGHT COUPLERS INTO ENDS OF ELBOW OR RACEWAY BASE. CENTERED ON THE JOINT BETWEEN THEM, AND TIGHTEN THE SET SCREWS TO SECURE THE ELBOW AND RACEWAY BASE PIECES TOGETHER.
4. INSTALL PLASTIC RACEWAY BASE EDGE PIECES INTO THE APPROPRIATE LOCATIONS ON THE ELBOW ASSEMBLY AND RACEWAY BASE.
5. PLACE WIRING AS DESIRED, SECURE IN PLACE WITH SUPPLIED WIRING HOLD-DOWNS.
6. SNAP COVER SECTIONS INTO PLACE TO COMPLETE ASSEMBLY USING RUBBER Mallet OR OTHER WIDE SOFT TOOL. USE CAUTION TO AVOID DAMAGE TO COVER SURFACE.

X = MINIMUM REQUIRED SCREW LOCATIONS FOR HARD FLOOR SURFACE USE. ADDITIONAL SCREWS TO MAINTAIN RACEWAY BASE CONFORMANCE TO SOFT OR IRREGULAR SURFACES.



ASSEMBLED VIEW WITH RACEWAY BASE SECTIONS

ASSEMBLED VIEW WITH COVER SECTIONS IN PLACE